



# HIT, CATCH & PLAY

## HAUKURU, KAPO, TĀKARO

### SKILL FOCUS

- Batting
- Catching

### COMPLEXITY



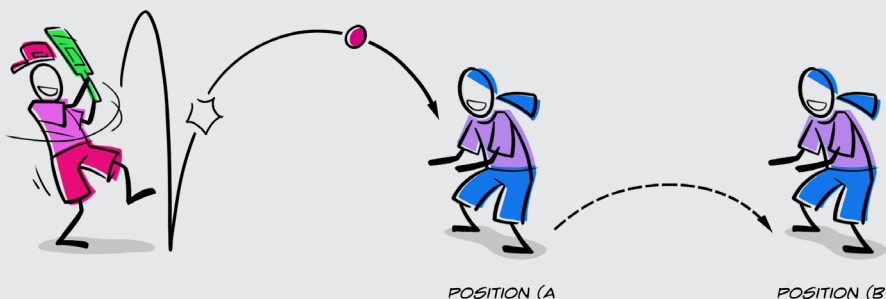
### WHAT OTHER SKILLS COULD BE INVOLVED

Perception Skills & Underarm Throwing.

### THINK QUICK — WHAT TO LOOK OUT FOR

- Encourage Smashies to say “BOUNCE” when the ball bounces and “HIT” when it hits the bat.
- Encourage Smashies to think about a bucket shape with their hands when catching.

## SET UP



\*Note: Ensure that the catcher is a safe distance initially from the batter (7-10 steps).

## LET'S PLAY

- Smashie batter drops the ball and after it bounces hits it to their partner.
- A point is scored if the ball is caught cleanly.
- If the Smashie pair make 5 continuous catches, the catcher takes a step back.
- Catcher furthest back after set number of hits wins.

### EQUIPMENT



Cones, Balls (Small or Large).  
Bats or Racquets.

### TIME



10 minutes on activity.

### SMASHIES GROUP



Small or large groups (split into pairs or teams) or try it at home with someone.

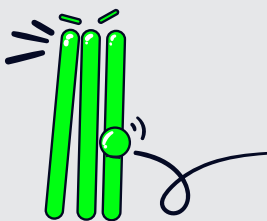
## VALUES

(PROMPT THE SMASHIES)



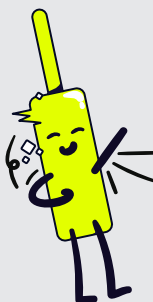
### HONESTY PONO

How could the Smashies be honest when they play this game?



### SUPPORT TAUTOKO

In what ways can Smashies support their partner or teammates when playing?



### COOPERATION MAHI TAHI

How could Smashies work together when they play?

## MIX IT UP

- ⊖ Use a wider implement (wider bat / racquet) or a larger ball.
- ⊕ The catcher throws the ball to the Smashie batter – to be hit on the bounce.

## SMASH IT UP



Mission – **Energy Boost:** If a catch is made one-handed the Smashie can move back two steps.



Boss Battle – Smashies vs Activators / Coaches / Teachers / Whānau.



Arena Mode – Create an invisible forcefield between the Smashie batter and catcher. The batter has to hit the ball higher as the forcefield gets taller.

## SMASHIES VALUES

(REFLECT WITH SMASHIES)

- What were some of the ways that your team cooperated today?
  - How did you show support for each other?
  - How were you honest in the game?



I did a good job of being cooperative / supportive / honest



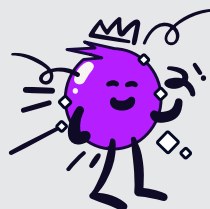
I was OK



I wasn't cooperative / supportive / honest



FIND MORE INFO :)



## DON'T FORGET TO ASK THE SMASHIES



- Reinforce the positive:  
*I Like the way you...*
- How could you stand when hitting the ball to your partner?
- What can you do when you hit to make the ball easier to catch?