



# SINGLES SMASH

## HAUKURU TAKITAHĪ

### SKILL FOCUS

- Running
- Batting

### COMPLEXITY



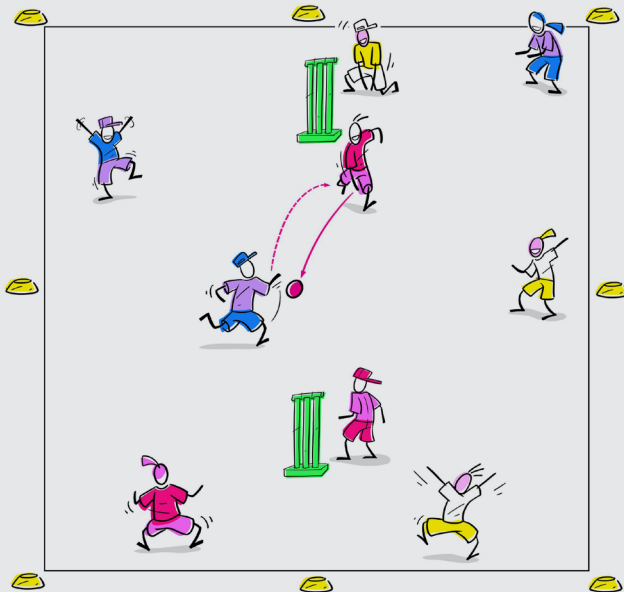
### WHAT OTHER SKILLS COULD BE INVOLVED

Ground Fielding, Catching, Throwing, Underarm Throwing & Perception Skills.

### THINK QUICK — WHAT TO LOOK OUT FOR

- Encourage Smashies to think about where they can throw the ball.
- Encourage Smashies to move to the ball to try and stop points being scored.

## SET UP



## LET'S PLAY

- Split Smashies into groups of three.
- Two Smashies at a time are the catching batters, with the third Smashie throwing the ball underarm.
- The other Smashie teams choose their fielding positions including one as wicketkeeper.
- The ball is lobbed to the first catching batter who must catch it, then throw the ball anywhere within the coned arena.
- Smashie batters run to the wickets opposite them to score points.
- If the ball moves outside of the coned rectangle, the Smashie does not score the point. Batters can be caught or run out.
- Every three balls, swap batters.

### EQUIPMENT



Cones, Balls (Small or Large), Wickets.  
Extras - Bats, Racquet.

### TIME



10 minutes on activity.

### SMASHIES GROUP



Small or large groups.

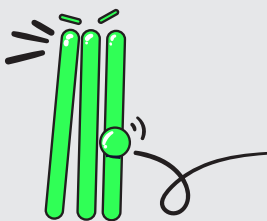
# VALUES

(PROMPT THE SMASHIES)



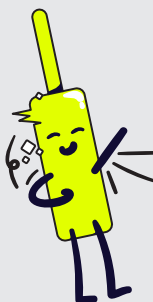
## HONESTY PONO

How could the Smashies be honest when they play this game?



## SUPPORT TAUTOKO

In what ways can Smashies support their partner or teammates when playing?



## COOPERATION MAHI TAHI

How could Smashies work together when they play?



# MIX IT UP

- ⊖ Start with three balls in a pile next to the catching batter rather than having a thrower and catcher.
- ⊕ Introduce a hitting implement such as a racquet or bat.
- ⊕ Introduce "calling" (yes, no, wait) with Smashie catching batters using this each time the ball is thrown.

# SMASH IT UP



Mission – You can score **Double Points** by running 2 runs.



Boss Battle – Smashies vs Activator / Coach / Whānau / Teacher (timed number of catches).



Arena Mode – Make the playing arena smaller to increase the challenge for the catching batters.

# SMASHIES VALUES

(REFLECT WITH SMASHIES)

- What were some of the ways that your team cooperated today?
  - How did you show support for each other?
  - How were you honest in the game?



I did a good job of being cooperative / supportive / honest



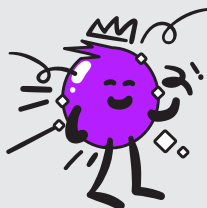
I was OK



I wasn't cooperative / supportive / honest



FIND MORE INFO :)



## DON'T FORGET TO ASK THE SMASHIES



- Reinforce the positive:  
*I Like the way you...*
- Where can you throw the ball to score the most points possible?
- How could you throw the ball to stop the fielders from catching the ball?