



SINGLES SMASH

HAUKURU TAKITAHĪ

SKILL FOCUS

- Running
- Batting

COMPLEXITY



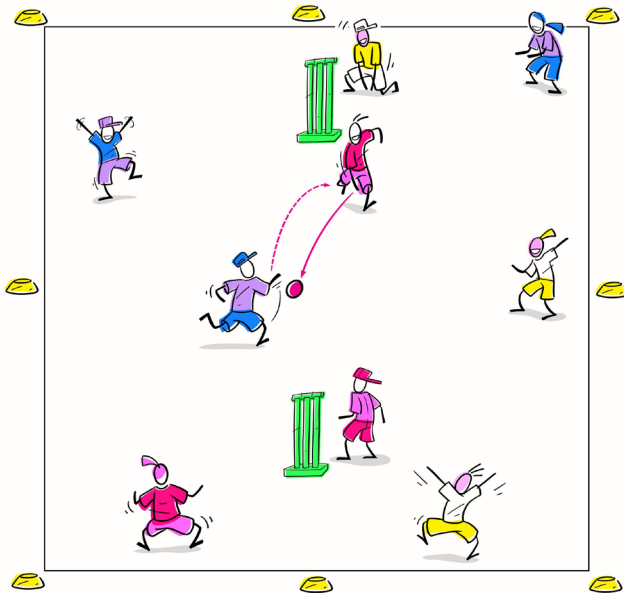
WHAT OTHER SKILLS COULD BE INVOLVED

Ground Fielding, Catching, Throwing, Underarm Throwing & Perception Skills.

THINK QUICK — WHAT TO LOOK OUT FOR

- Encourage Smashies to think about where they can throw the ball.
- Encourage Smashies to move to the ball to try and stop points being scored.

SET UP



LET'S PLAY

- Split Smashies into groups of three.
- Two Smashies at a time are the catching batters, with the third Smashie throwing the ball underarm.
- The other Smashie teams choose their fielding positions including one as wicketkeeper.
- The ball is lobbed to the first catching batter who must catch it, then throw the ball anywhere within the coned arena.
- Smashie batters run to the wickets opposite them to score points.
- If the ball moves outside of the coned rectangle, the Smashie does not score the point. Batters can be caught or run out.
- Every three balls, swap batters.

EQUIPMENT



Cones, Balls (Small or Large), Wickets.
Extras - Bats, Racquet.

TIME



10 minutes on activity.

SMASHIES GROUP



Small or large groups.

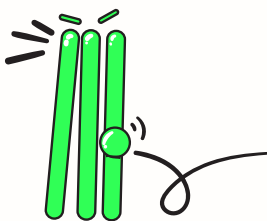
VALUES

(PROMPT THE SMASHIES)



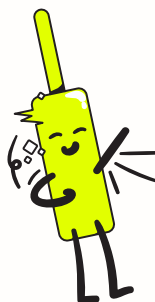
HONESTY PONO

How could the Smashies be honest when they play this game?



SUPPORT TAUTOKO

In what ways can Smashies support their partner or teammates when playing?



COOPERATION MAHI TAHI

How could Smashies work together when they play?



MIX IT UP

- ⊖ Start with three balls in a pile next to the catching batter rather than having a thrower and catcher.
- ⊕ Introduce a hitting implement such as a racquet or bat.
- ⊕ Introduce "calling" (yes, no, wait) with Smashie catching batters using this each time the ball is thrown.

SMASH IT UP



Mission – You can score **Double Points** by running 2 runs.



Boss Battle – Smashies vs Activator / Coach / Whānau / Teacher (timed number of catches).



Arena Mode – Make the playing arena smaller to increase the challenge for the catching batters.

SMASHIES VALUES

(REFLECT WITH SMASHIES)

- What were some of the ways that your team cooperated today?
 - How did you show support for each other?
 - How were you honest in the game?



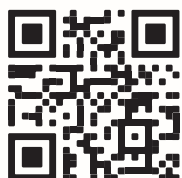
I did a good job of being cooperative / supportive / honest



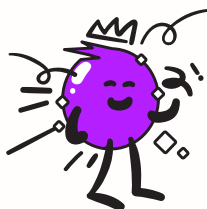
I was OK



I wasn't cooperative / supportive / honest



FIND MORE INFO :)



DON'T FORGET TO ASK THE SMASHIES



- Reinforce the positive:
I Like the way you...
- Where can you throw the ball to score the most points possible?
- How could you throw the ball to stop the fielders from catching the ball?